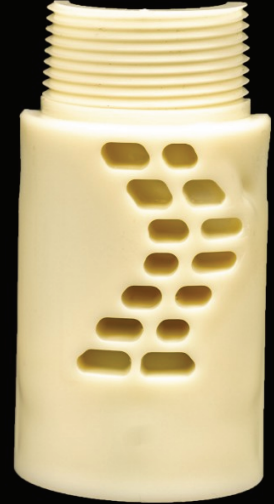




FARROWFLOW®

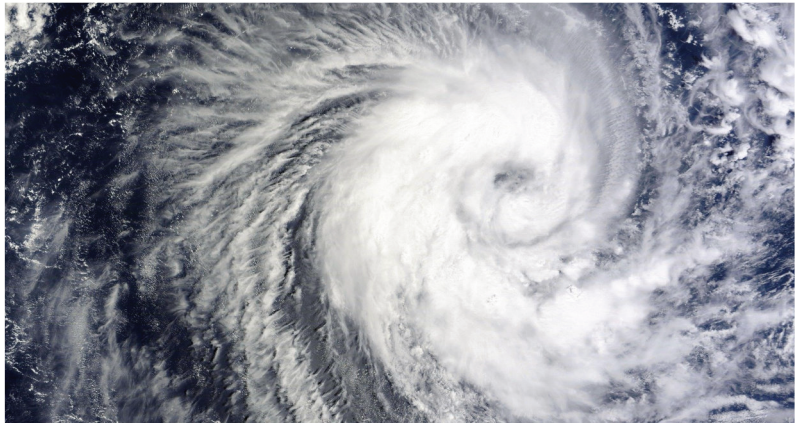
A Patented Insert for Use in Blasting



Farrow Flow®

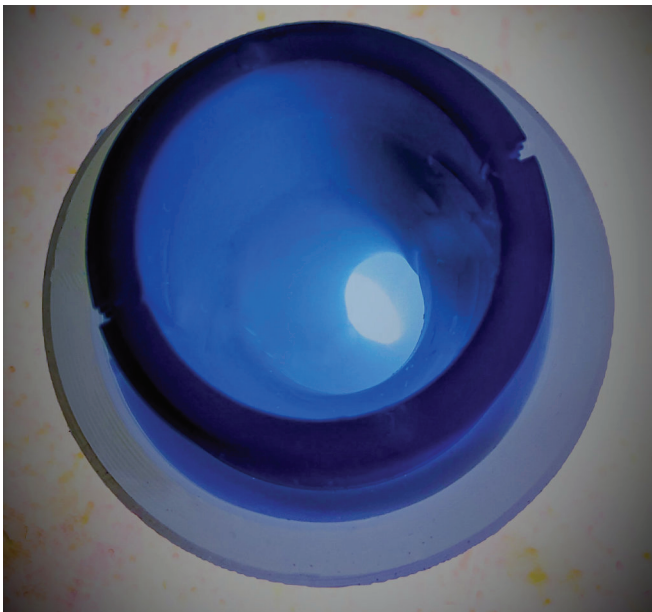
Farrow FLOW® technology is now available with a patented insert designed to be easily installed into the air outlet of any blast machine. Once inserted, this state-of-the-art technology twists the air in a vortex motion creating an optimal mixture at the nozzle.

THE RESULT...25% wider spread at the nozzle...
25% savings in time, media and fuel consumption.
GO WITH THE FLOW!



The Science Behind the Invention

By creating a helical pattern in the air flow, Farrow FLOW® patented technology creates added momentum when added to traditional blast pot air lines. Pressure is increased by the spinning motion created inside of the blast pipe as the media and air mixture travels toward the nozzle. This rotating flow as we know from the knowledge of a tornado, is also known as vortex flow which causes the mixture to be pushed to the interior walls of the blast pipe before exiting the nozzle. This creates dramatically visible results when the mixture vents to atmosphere at the end of the nozzle as the vortex exits the nozzle with a wider and more consistent spread at a higher velocity.



www.farrowflow.com

FARROWFLOW®

A Patented Insert for Use in Blasting

- 25% Faster
- 25% Less Media
- 25% Lower Fuel Consumption
- 25% Lower Emissions
- Easier on the operator
- Money Back Guarantee

25%

Specifications

Length: 2.56"

Width: 2.43"

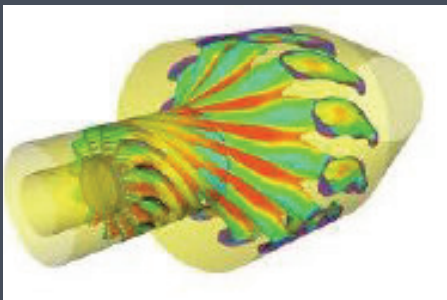
Height: 3.84"

Weight: 6.4 oz

Each Unit includes:

1.25" NPT Male and Female Thread

US Patent Application No: 63/085329



Simulation of Farrow Flow at the nozzle



WWW.FARROWFLOW.COM

Turbo Charge Your Existing Blast Pot!

In less than 2 minutes, you can convert your existing wet or dry blast pot to Farrow FLOW technology instantly saving you time and money!

Dealer Info: